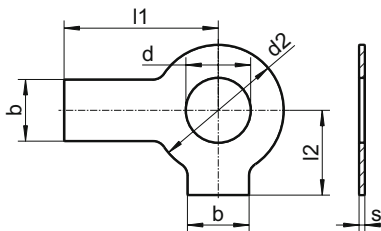


# DIN 463

## Tap washers

with two taps

Шайба стопорная с двумя лапками



d	for	d2	s	l1	l2	b
4,3	M4	9,0	0,38	14	6,5	5
5,3	M5	10,0	0,50	16	8,0	6
6,4	M6	12,5	0,50	18	9,0	7
8,4	M8	17,0	0,75	20	11,0	8
10,5	M10	21,0	0,75	22	13,0	10
13	M12	24,0	1,00	28	15,0	12
15	M14	28,0	1,00	28	16,0	12
17	M16	30,0	1,00	32	18,0	15
19	M18	34,0	1,00	36	20,0	18
21	M20	37,0	1,00	36	21,0	18
23	M22	39,0	1,00	42	23,0	20
25	M24	44,0	1,00	42	25,0	20
28	M27	50,0	1,60	48	29,0	23
31	M30	56,0	1,60	52	32,0	26
34	M33	60,0	1,60	56	34,0	28
37	M36	66,0	1,60	60	38,0	30
40	M39	72,0	1,60	64	41,0	32

Grade	SU
▲●	100
▲●	100
▲●	100
▲●	100
▲●	100
▲●	100
▲●	100
▲●	50
▲●	50
▲●	50
▲●	50
▲●	50
▲●	25
▲●	25
▲●	20
▲●	20
▲●	20
▲●	10

■ A1 / ▲ A2 / ● A4 | SU: Sales unit | All measurements in mm | Other dimensions on request.

Example item no. 463-2-8,4 DIN 463 - A2 - Ø 8,4mm